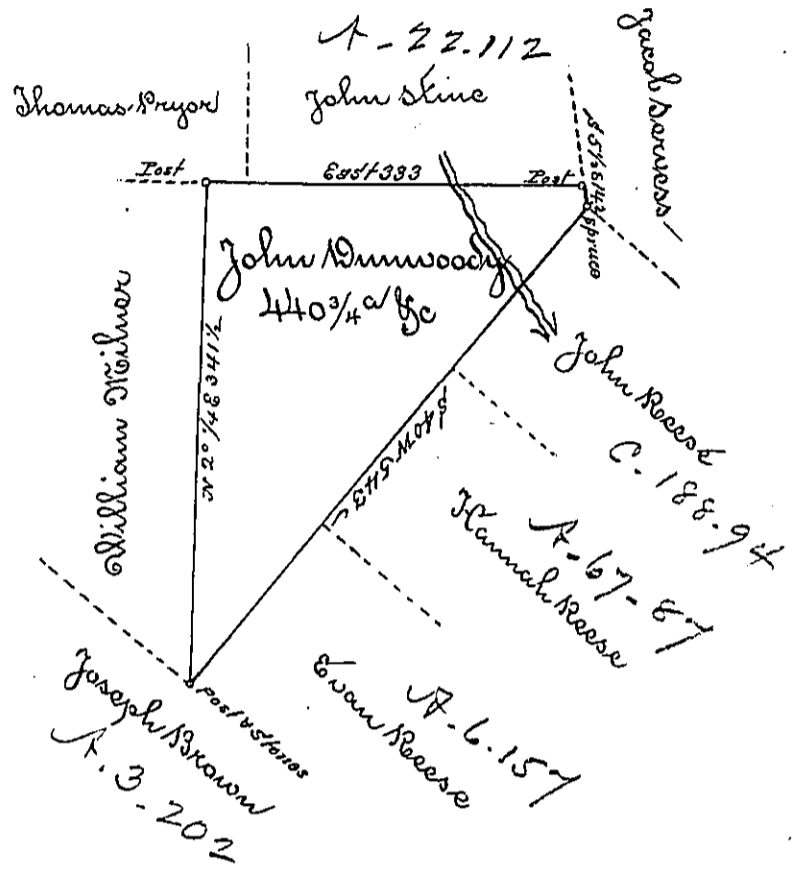


✓



A Draft of a tract of Land called Situate (obliterated) Land surveyed for Abraham Singer & on the Waters of Keli (obl.) Luzerne County containing four hundred & forty acres & three quarters (obl.) the allowance surveyed Sept 3rd 1793 for John Dunwoody by virtue of a Warrant dated March 1st 1793. To Daniel Brodhead Esq }
 Survey Genl }
 by Wm Gray D.S.

IN TESTIMONY that the above is a copy of the original remaining on file in the Department of Internal Affairs of Pennsylvania, made conformably to an Act of Assembly approved the 16th day of February, 1833, I have hereunto set my Hand and caused the Seal of said Department to be affixed at Harrisburg, this
 Third day of March 1896.

James Whittier
 Secretary of Internal Affairs.